

# kabuto



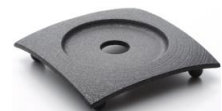
A Yamagata casting teapot / kettle designed by Yukio Hashimoto. Hashimoto is one of the leading figures in modern design. His recent work can be seen at The Peninsula Tokyo for space design. He Yamagata is one of the largest production regions of casting iron tableware along with Nanbu (Iwate) and produces most kettles for tea ceremonies. Its stylish and modern shape resembles kabuto, an ancient helmet of samurai warriors. It is silicone coated on the inside to prevent rust from gathering. Silicone coated ironware is beneficial for iron consumption. It can be heated directly on the stove. Also compatible with induction cookers. Can be used as a liquor container.

- use/ teapot, kettle
- materials/ cast iron, acrylic lacquer
- design/ Yukio Hashimoto
- traditional craft/ Yamagata casting (Yamagata), hand-made
- origin/ Japan



kabuto M・S

- size/ M: W170×D140×H180mm(1.2ℓ) S: W140×D110×H140mm(0.55ℓ)
- weight/ M: 1770g S: 1070g



kbt trivet M・S

- size/ M: W110×D110×H20mm
- S: W85×D85×H15mm
- weight/ M: 260g S: 170g